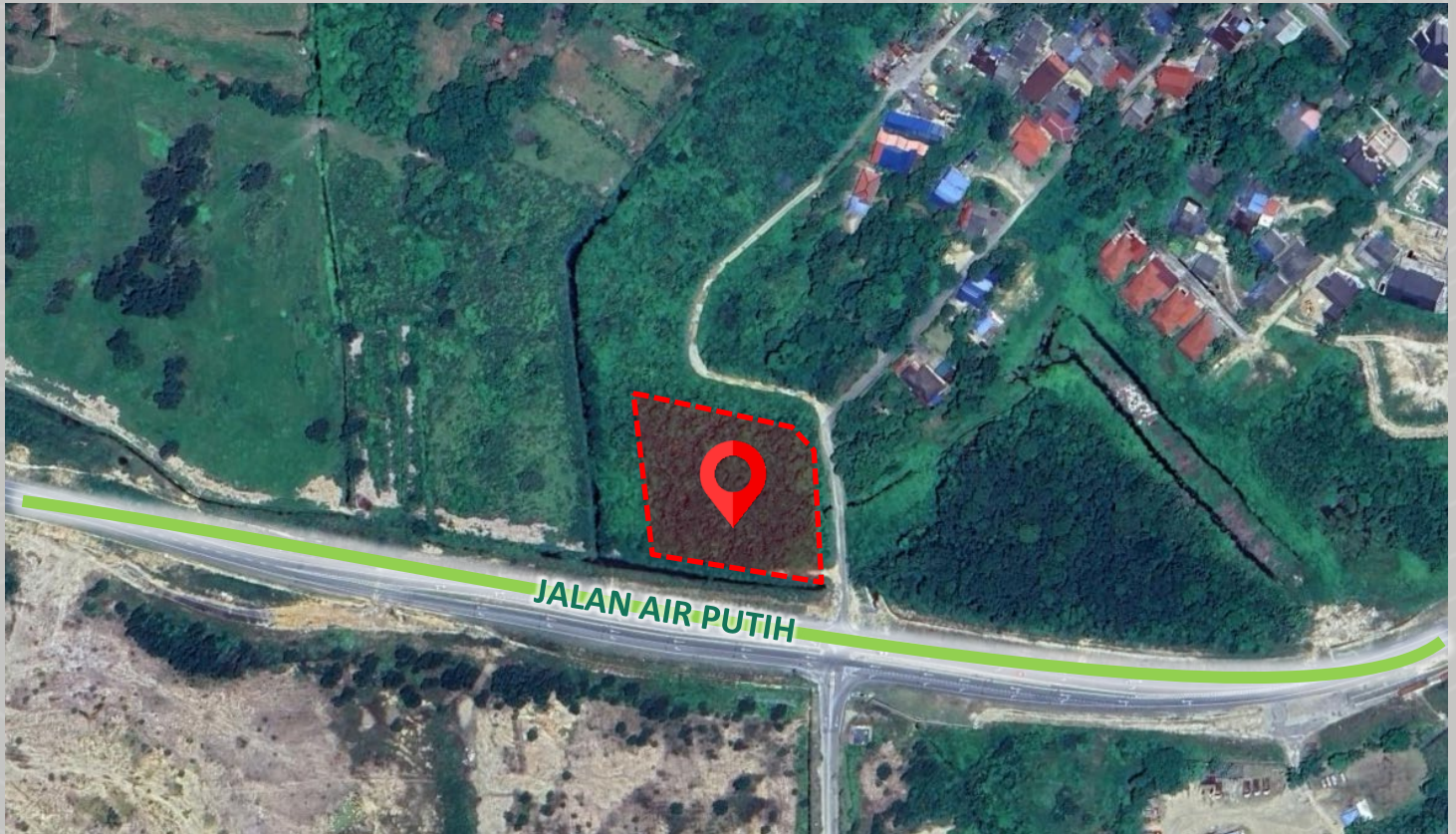


EXCLUSIVE MARKETING AGENT

PRIME COMMERCIAL LAND

@ PASIR SEMUT, KEMAMAN, TERENGGANU



Note : The picture and demarcation above are for illustrative purposes only.



Location

Lot 1289, Daerah Kemaman,
Mukim Pasir Semut,
Terengganu



Land Use & Zoning

Building
Commercial



Tenure

Freehold



Visibility

Prominent Road Frontage
along Jalan Air Putih with
excellent exposure



Surrounding Occupiers

Kolej Vokasional
Kemaman, SMK Binjai, SK
Seri Jaya, Pasar Binjai &
INSPI Yayasan Islam



Land Area

Approx. 1.92 acres



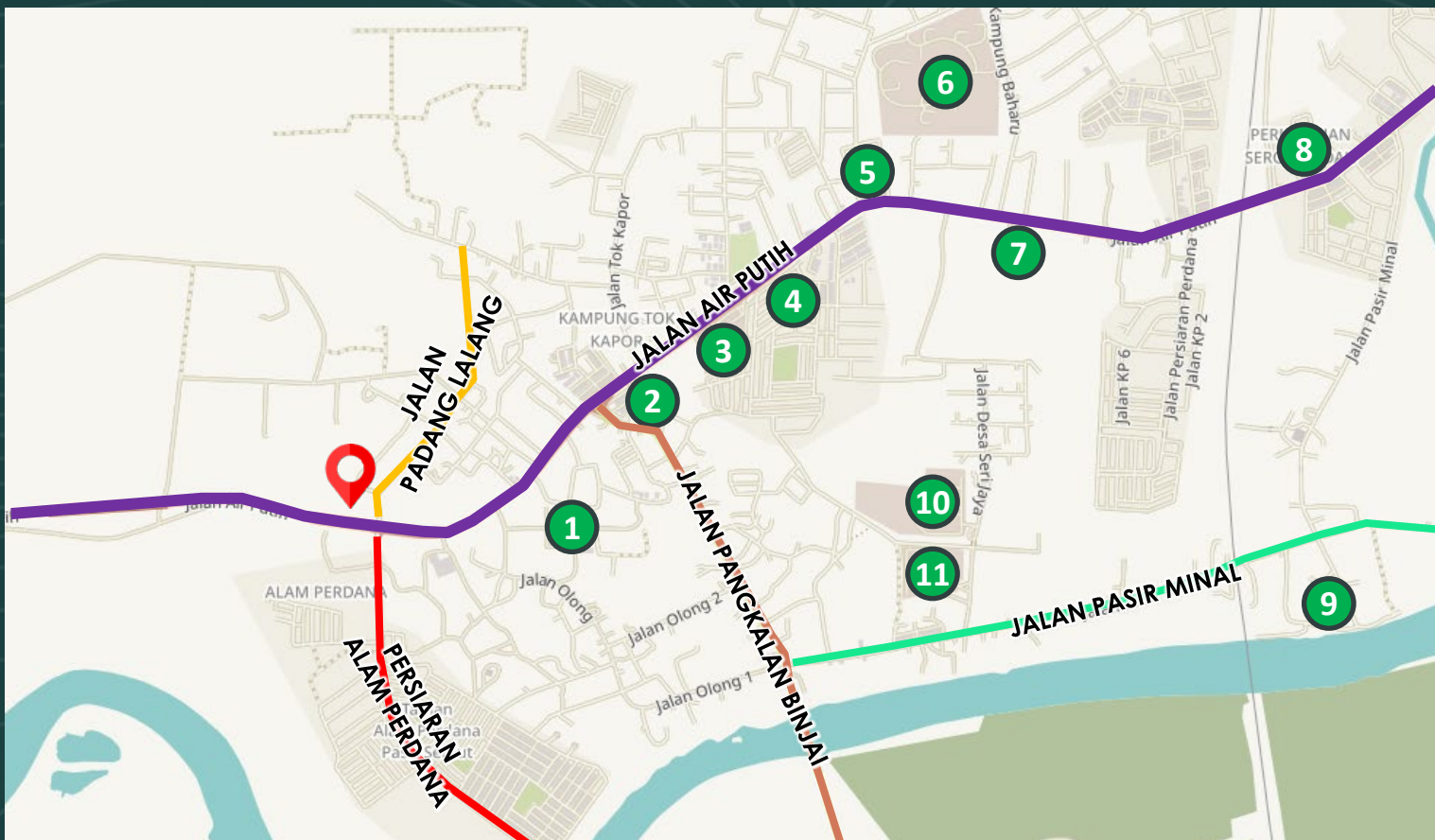
Land Status

Malay Reserved



Accessibility

Easily accesible via
Jalan Air Putih, Jalan
Padang Lalang & Persiaran
Alam Perdana



-  Subject Property
- 1** INSTITUT PENGAJIAN YAYASAN ISLAM TERENGGANU
- 2** PASAR BINJAI
- 3** SK BINJAI
- 4** KLINIK ROSE KEMAMAN
- 5** MR. DIY
- 6** KOLEJ VOKASIONAL KEMAMAN
- 7** PETRONAS BINJAI
- 8** TMG MART BINJAI
- 9** JETI KAMPING PASIR MINAL
- 10** SMK BINJAI
- 11** SK SERI JAYA

CONNECT WITH US

Siew Mei REN 09802

T : +6012-928 2869

E : siewmei.lok@cbre-wtw.com.my

Darren PV 3363

T : +6016-942 1033

E : darren.cheong@cbre-wtw.com.my

☎ : +609-515 0000

www.cbre-wtw.com.my



E(1)0507

E & O E The information contained herein has been obtained from sources that we deem reliable. We have no reason to doubt its accuracy but we do not guarantee it. Prospective purchasers are requested to take such action as may be necessary to satisfy themselves on any pertinent matter. If in doubt, please consult a professional advisor.