

EXCLUSIVE OPPORTUNITY TO ACQUIRE

DEVELOPMENT LANDS

ALONG JALAN PULAI, GELANG PATAH,
ISKANDAR PUTERI, JOHOR



CLOSING DATE : 18 MARCH 2026, 12:00 P.M.



LAND AREA (TOTAL)

41.917 hectares
(≈ 103.6 acres)



CATEGORY OF LAND USE

Development Land with
Residential Zoning



TENURE

Freehold



LOCATION

Along Jalan Pulai,
Gelang Patah, Iskandar
Puteri



ACCESSIBILITY

Easily accessible from the Malaysia-
Singapore Second Link Expressway,
JB Parkway, Lebuhraya Kota Iskandar



DENSITY

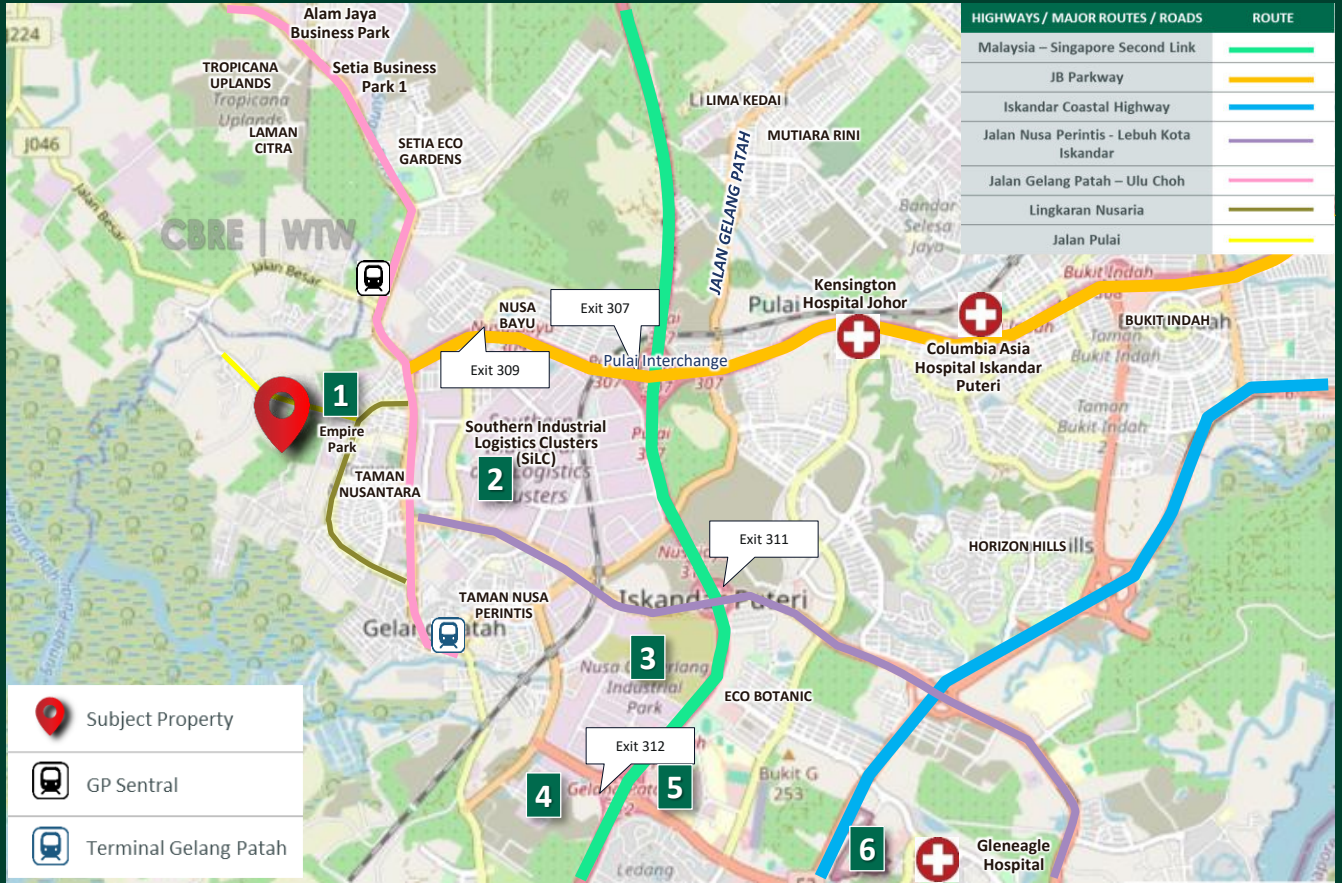
Up to 20 units
per acre

SALE BY TENDER

SURROUNDING LANDMARKS

 Subject Property

- | | | |
|--|--|--|
| 1 Empire Park @ Iskandar Puteri | 2 Southern Industrial Logistics Clusters (SiLC) | 3 Nusa Cemerlang Industrial Park (NCIP) |
| 4 Nusajaya Tech Park (NTP) | 5 EduCity | 6 Legoland Malaysia |



Jonathan Lo | E 2288

T : +6 017 – 273 5378

E : jonathan.lo@cbre-wtw.com.my

Ashley Goh | PV 2564

T : +6 012 – 751 5262

E : ashley.goh@cbre-wtw.com.my

Exclusive Marketing Agent :

CBRE WTW REAL ESTATE SDN. BHD.

199201000893 (232397-D)

18.01, Level 18, South Tower, Mid Valley Southkey, Persiaran Southkey 1, 80150 Johor Bahru, Johor, Malaysia

T : + 6 07 – 224 3388 F : + 6 07 – 224 9769

www.cbre-wtw.com.my



E(1)0507/4

E & O E The information contained herein has been obtained from sources that we deem reliable. We have no reason to doubt its accuracy but we do not guarantee it. Prospective purchasers are requested to take such action as may be necessary to satisfy themselves on any pertinent matter. If in doubt, please consult a professional advisor.