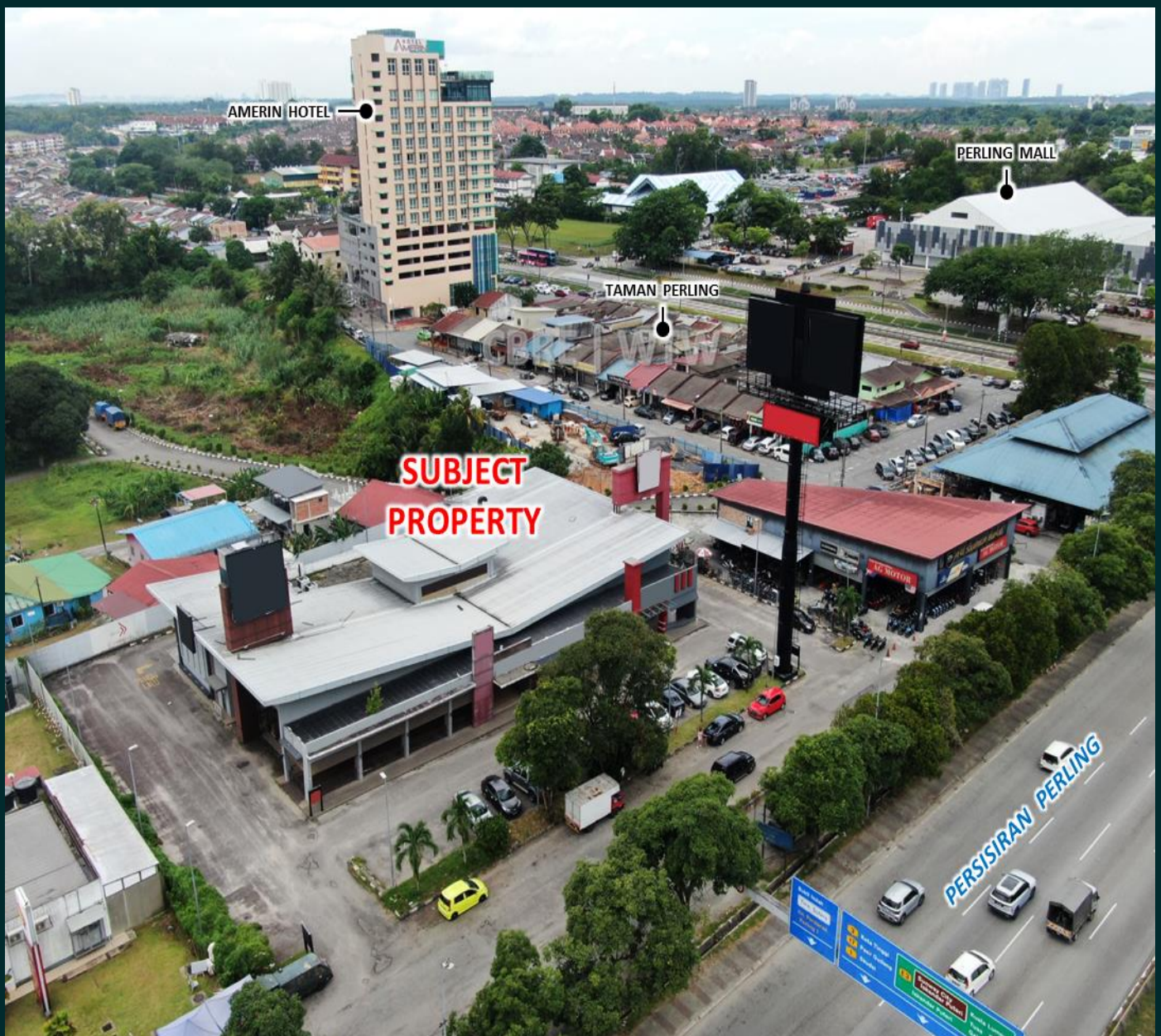


SALE BY TENDER

A STANDALONE SINGLE STOREY COMMERCIAL BUILDING

Persisiran Perling, Taman Perling, Johor Bahru, Johor



EXCLUSIVE MARKETING AGENT

For Sale By Tender

A STANDALONE SINGLE STOREY COMMERCIAL BUILDING



Land Area

Approx.
45,014 sf



Built Up

Approx.
13,728 sf



Tenure

Freehold



Occupancy Status

Tenanted



Usage

Commercial



Accessibility

Accessible from major roads, including
Persisiran Perling, Skudai Highway and
Jalan Tun Abdul Razak



Surrounding

Perling Mall, Amerin Hotel, KIP Mall Tampoi,
Paradigm Mall, etc

For More Enquiries, Please Connect With Us

Esther | PV 2425

T : +6016-814 5789

E : esther.chin@cbre-wtw.com.my

Sofiah | PV 3231

T : +6011-1237 5541

E : iksofiah.mfuad@cbre-wtw.com.my

Office : +607-224 3388

www.cbre-wtw.com.my

E & O E The information contained herein has been obtained from sources that we deem reliable. We have no reason to doubt its accuracy but we do not guarantee it. Prospective purchasers are requested to take such action as may be necessary to satisfy themselves on any pertinent matter. If in doubt, please consult a professional adviser.

CBRE | WTW