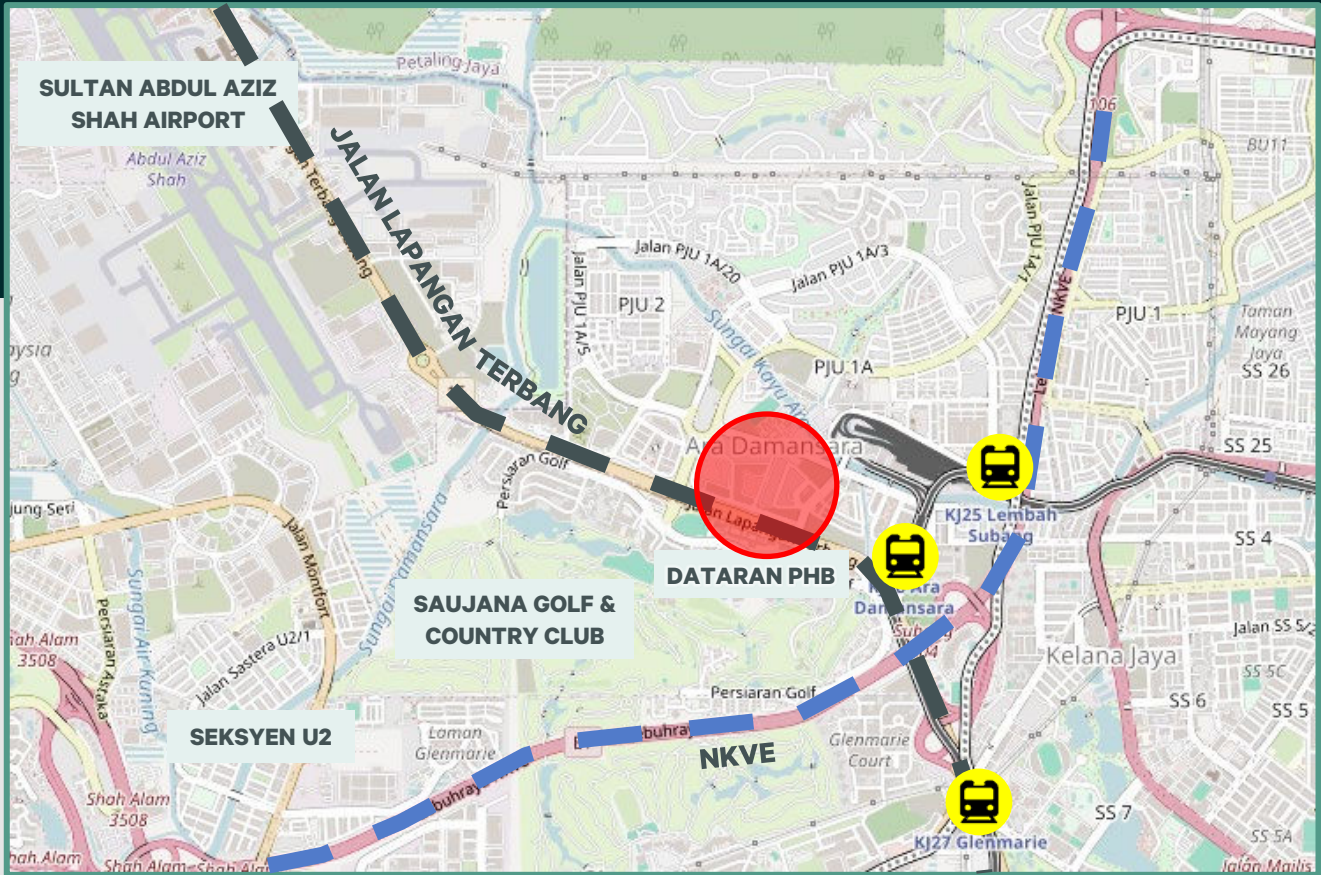


FOR SALE BY EXPRESSION OF INTEREST

# 1,754 Car Park Bays

## @ PETALING JAYA, SELANGOR



Jalan Pju 1a/46 Petaling  
Jaya  
**Location**



Leasehold  
**Tenure**



1,754 car parking bays  
**For Sale - Parking  
Facility**



Integrated within a  
Commercial  
Development with Office  
Building

For More Enquiries, Please Connect With Us

**Armand | PV 2776**

T : +6012 309 9004

E : armand.suhantoro@cbre-wtw.com.my

**Chris | PV 2643**

T : +6012 618 2881

E : christopher.ng@cbre-wtw.com.my

CBRE WTW REAL ESTATE SDN. BHD. 199201000893 (232397-D) | HQ : +603-2616 8888 | [www.cbre-wtw.com.my](http://www.cbre-wtw.com.my)

E(1)0507

E & O E The information contained herein has been obtained from sources that we deem reliable. We have no reason to doubt its accuracy but we do not guarantee it. Prospective purchasers are requested to take such action as may be necessary to satisfy themselves on any pertinent matter. If in doubt, please consult a professional advisor.

Exclusive Marketing Agent

**CBRE** | **WTW**