

FOR SALE BY TENDER

CLOSING DATE: 3:00 P.M., 20th June, 2024, THURSDAY

53.97-ACRE INDUSTRIAL COMPLEX

Gebeng Industrial Estate, Pahang, West Malaysia



LOCATION

GEBENG INDUSTRIAL ESTATE,
PAHANG, WEST MALAYSIA



LAND AREA

APPROX
53.97 ACRES



TENURE

LEASEHOLD 99 YEARS



LAND USE & ZONING

HEAVY INDUSTRY



PROPERTY DESCRIPTION

1 PARCEL OF INDUSTRIAL
LAND ENCOMPASSING
SEVERAL FACTORIES /
WAREHOUSES ON-SITE



DISTANCE

KUANTAN PORT – APPROX. 5 KM
ECRL STATION @ KUANTAN PORT
CITY – ESTIMATED @ 6 KM
NEW INTERNATIONAL AIRPORT -
APPROX. 24KM



POTENTIAL

NEAREST INDUSTRIAL ESTATE
CONNECTING
KUANTAN PORT & ECRL
STATION



ACCESSIBILITY

- JALAN KUANTAN-
KEMAMAN
- GEBENG BYPASS

For further viewing / enquiries, please contact :

Exclusive Marketing Agent

Siew Mei REN 09802

+6012-928 2869

[siewmei.lok@cbre-
wtw.com.my](mailto:siewmei.lok@cbre-wtw.com.my)

Alan Tan PEA 3780

+6016-988 4178

[ooiloon.tan@cbre-
wtw.com.my](mailto:ooiloon.tan@cbre-wtw.com.my)

CBRE | WTW

CBRE WTW Real Estate Sdn Bhd (199201000893)

[www.cbre-
wtw.com.my](http://www.cbre-wtw.com.my)

Tel: (609) 515 0000

Fax: (609) 514 5793



E(1)0507

E & O E The information contained herein has either been given to us by the owner of the property or obtained from sources that we deem reliable. We have no reason to doubt its accuracy but we do not guarantee it. Prospective purchasers are requested to take such action as may be necessary to satisfy themselves on any pertinent matter.

PHOTOGRAPHIC PRESENTATION OF THE SUBJECT SITE



OFFICE & ADMINISTRATION



WAREHOUSE



TRAINING FACILITY



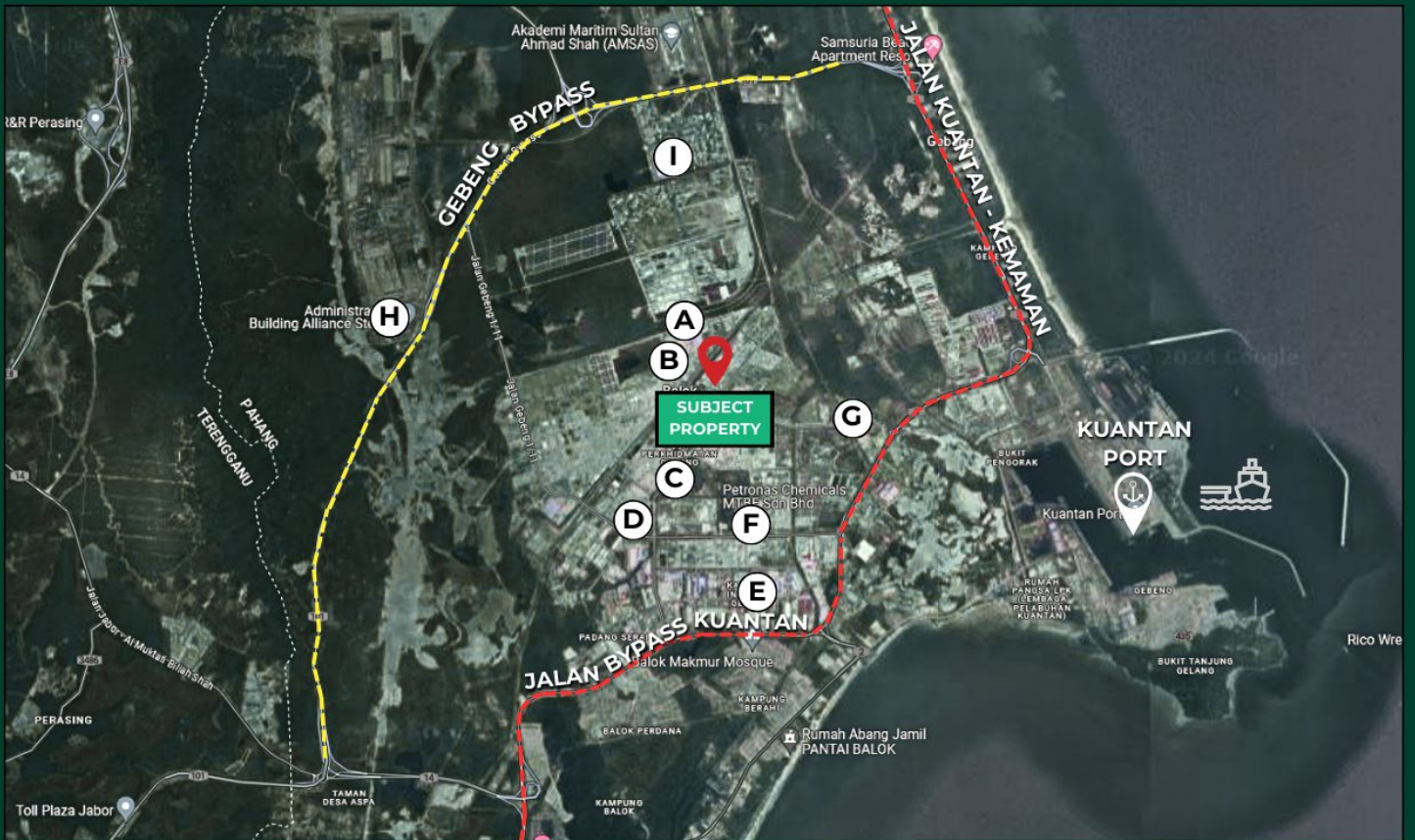
ASSEMBLY LINE FACTORY



ASSEMBLY LINE FACTORY



CANTEEN



A. POLYPLASTICS ASIA PACIFIC
 B. EASTMAN CHEMICAL (MALAYSIA) SDN. BHD.
 C. KANEKA MALAYSIA

D. D ALLIANCE SDN. BHD.
 E. D'LOBSTER (MALAYSIA)
 F. PETRONAS CHEMICALS MTBE SDN BHD

G. NICE RIKA BIOTECHNOLOGIES SDN. BHD.,
 H. ALLIANCE STEEL (M) SDN BHD
 I. CAMEL POWER (M) SDN BHD