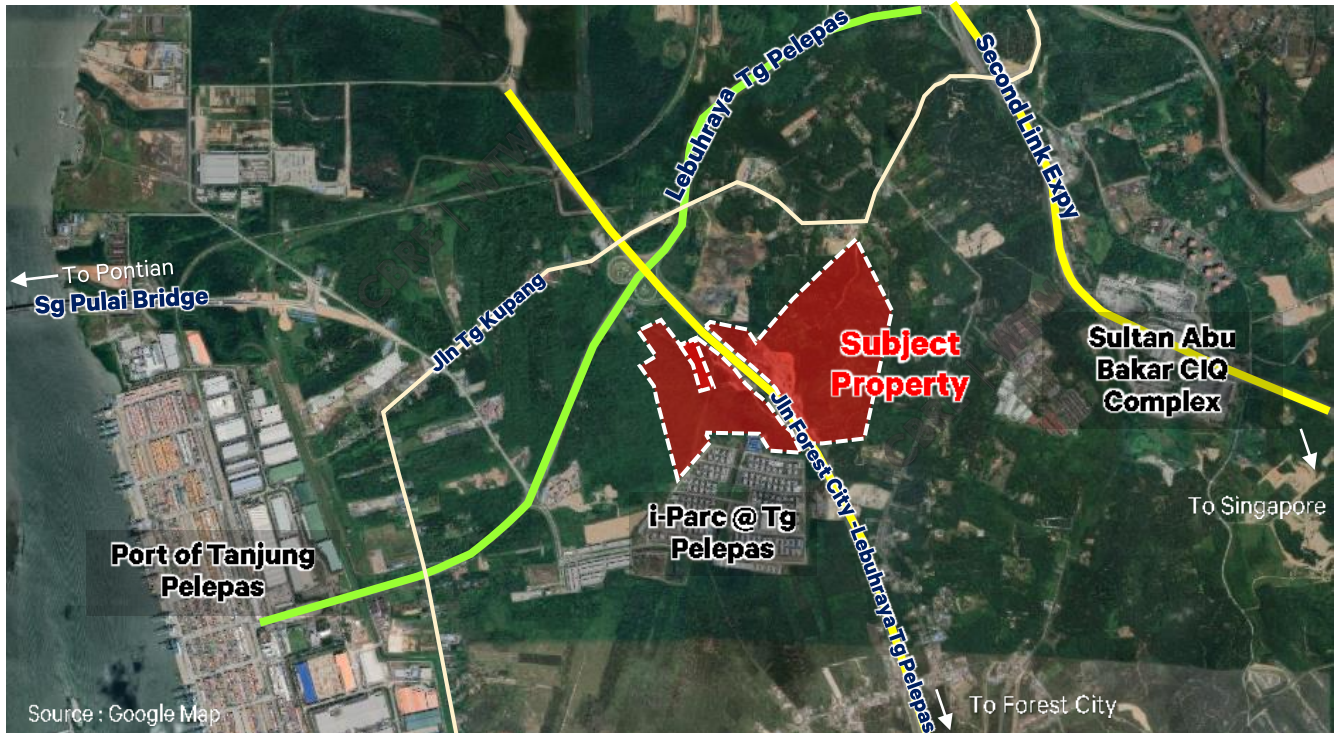


FOR SALE

CLOSING DATE :
24 APRIL 2023 (MON) @ 12PM

321-ACRE DEVELOPMENT LAND POTENTIAL FOR INDUSTRIAL DEVELOPMENT ALONG JALAN FOREST CITY - TANJUNG PELEPAS, JOHOR



KEY INVESTMENT HIGHLIGHTS

- **CLOSE PROXIMITY** to Port of Tanjung Pelepas (PTP), i-Parc@Tanjung Pelepas, Forest City and CIQ Second Link
- **FREEHOLD**
- Total Land Area : ≈ **321 ACRES**
- Zoned for residential development, potential for **INDUSTRIAL DEVELOPMENT**

For enquiries & Information Memorandum, kindly contact :-



SHIRLEY (PV 1201)
012-711 2376

T : 07 - 224 3388



ASHLEY (PV 2564)
012-751 5262

F : 07- 224 9769

MARKETING AGENT :

CBRE | WTW

CBRE WTW REAL ESTATE SDN BHD
199201000893 (132397-D)

www.cbre-wtw.com.my



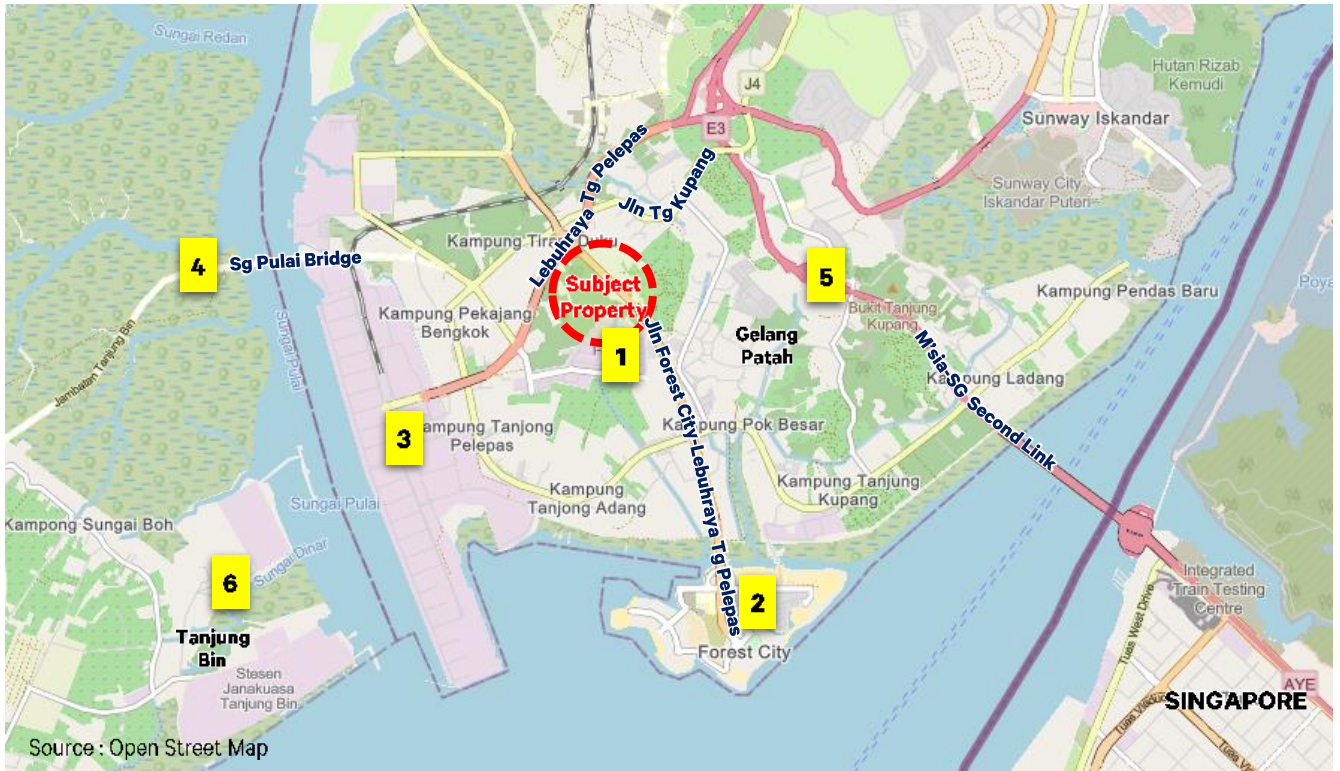
E(105074)

E & O E The information contained herein has either been given to us by the owner of the property or obtained from sources that we deem reliable. We have no reason to doubt its accuracy but we do not guarantee it. Prospective purchasers are requested to take such action as may be necessary to satisfy themselves on any pertinent matter.

FOR SALE

**CLOSING DATE :
24 APRIL 2023 (MON) @ 12PM**

321-ACRE DEVELOPMENT LAND POTENTIAL FOR INDUSTRIAL DEVELOPMENT ALONG JALAN FOREST CITY - TANJUNG PELEPAS, JOHOR



**i-Parc @ Tanjung Pelepas
(100 M)**



**Forest City
(4 KM)**



**Port Of Tanjung Pelepas
(4KM)**



**Sungai Pulai Bridge
(5 KM)**



**CIQ Sultan Abu Bakar Tanjung
Kupang (CIQ 2nd Link) (7 KM)**



**Tanjung Bin Petrochemical &
Maritime Industrial Centre (13 KM)**

CBRE | WTW

**www.cbre-wtw.com.my
+607 - 224 3388**



E100507/4

E & O E The information contained herein has either been given to us by the owner of the property or obtained from sources that we deem reliable. We have no reason to doubt its accuracy but we do not guarantee it. Prospective purchasers are requested to take such action as may be necessary to satisfy themselves on any pertinent matter.