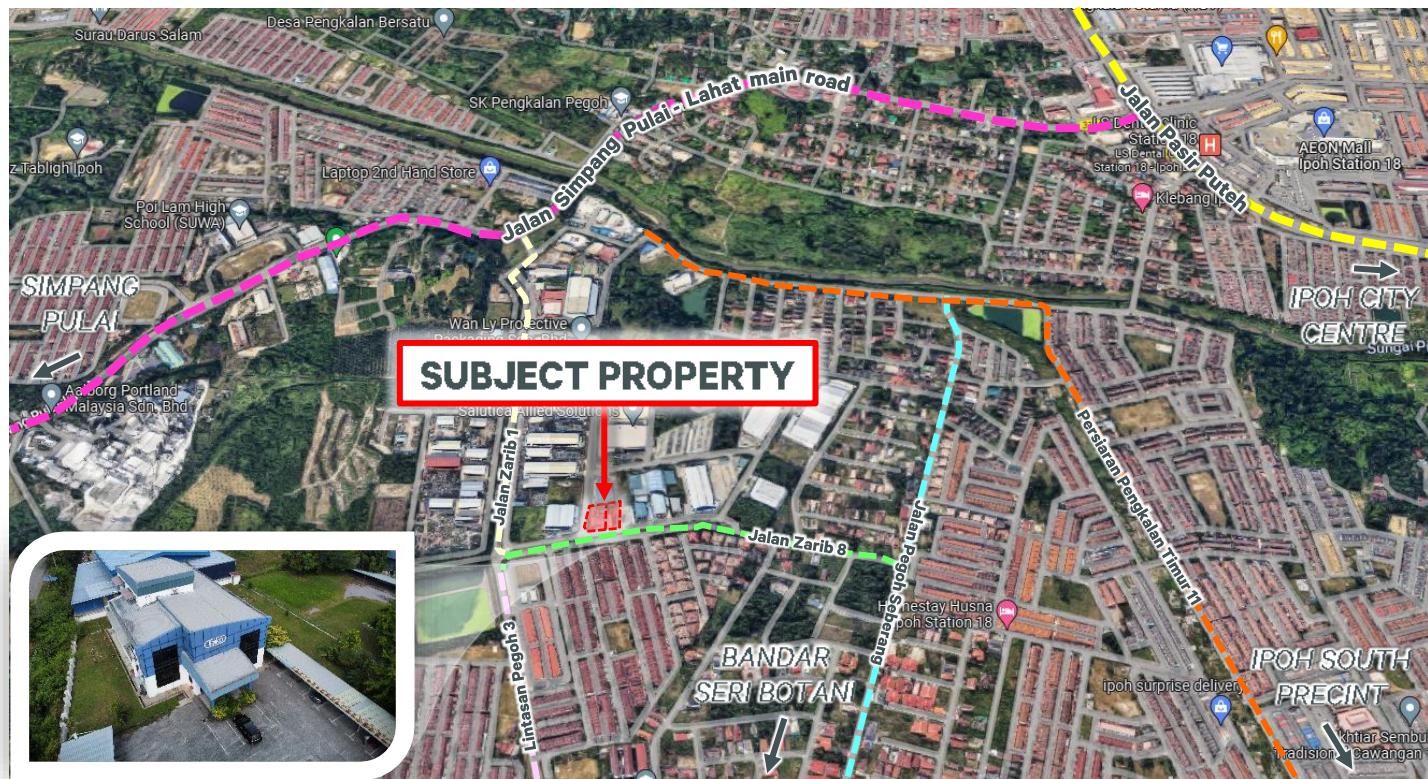


FOR SALE

# DETACHED FACTORY WITH OFFICE SPECIFICATION & INDUSTRIAL LAND

## @ Zarib Industrial Park, Ipoh Perak



- **A CORNER LOT TWO AND A HALF (2.5) – STOREY DETACHED FACTORY WITH OFFICE SPECIFICATION ALONG WITH A PARCEL OF INDUSTRIAL LAND** *Source: Google Maps*
- **TOTAL LAND AREA** of approx. 62,538 sq. ft. ➤ **BUILT-UP AREA** of approx. 10,000 sq. ft.
- **TENURE** with 99-year leasehold interest with remaining 73 years
- **EASILY ACCESSIBLE** from all directions via Jalan Pasir Puteh, Simpang Pulai – Lahat main road as well as Jalan Pegoh Seberang
- **MATURE LOCALITY** surrounding by industrial, residential, commercial and retail centres
- **WELL SUPPORTED AREA** with variety selections of amenities such as financial institutions, education institutions & etc.

**Exclusive Marketing Agent:**

**Ruwen Wong** (PV 1596) | 012-966 9293

**Khor** (REN 15191) | 012-521 5906

Ruwen.Wong@cbre-wtw.com.my | SeongWah.Khor@cbre-wtw.com.my

**CBRE | WTW**

CBRE WTW Real Estate Sdn Bhd (199201000893) (232397-D)

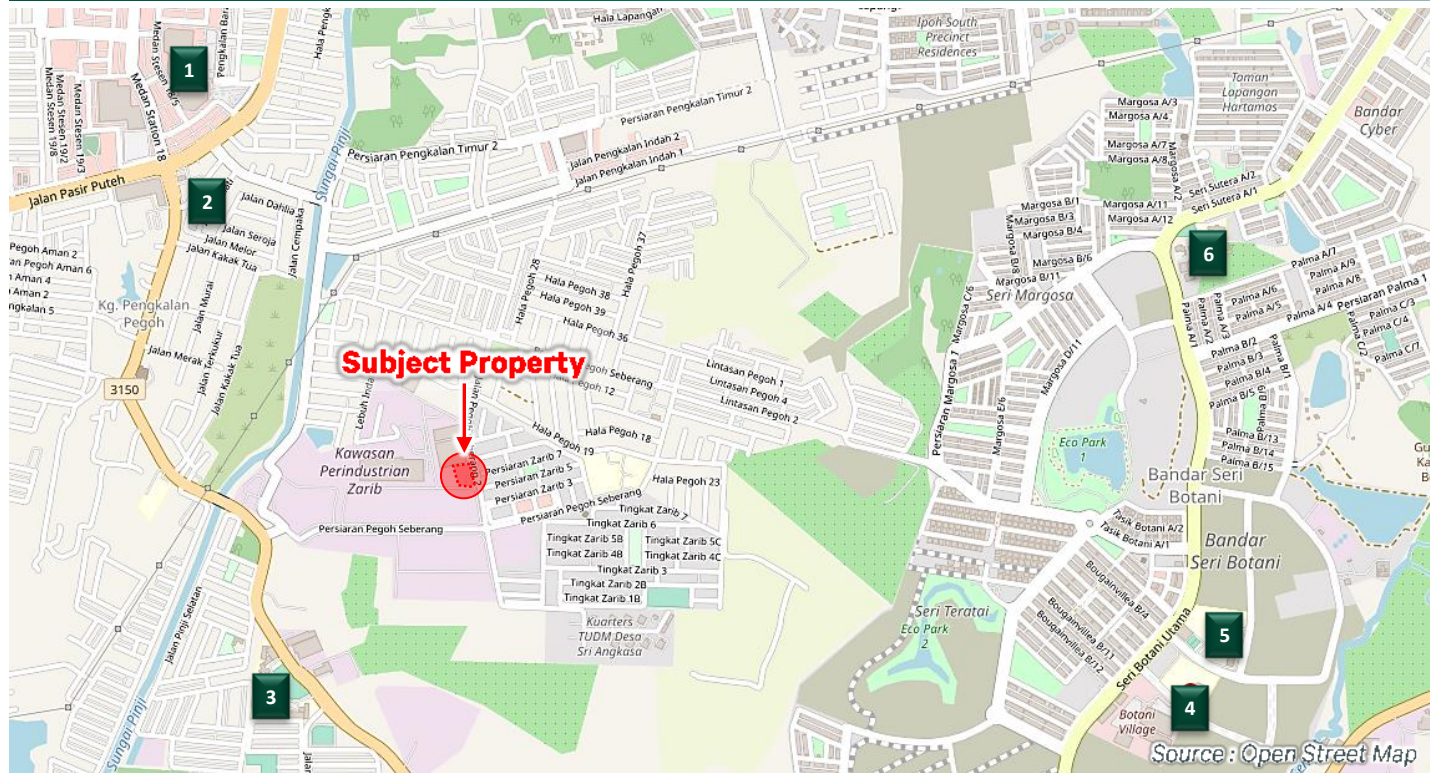
www.cbre-wtw.com.my



**E & OE** The information contained herein has either been given to us by the owner of the property or obtained from sources that we deem reliable. We have no reason to doubt its accuracy but we do not guarantee it. Prospective purchasers are requested to take such action as may be necessary to satisfy themselves on any pertinent matter.

FOR SALE

# DETACHED FACTORY WITH OFFICE SPECIFICATION & INDUSTRIAL LAND @ Zarib Industrial Park, Ipoh Perak



Aeon Mall Station 18



McDonald's Station 18



Poi Lam High School



Botani Village



Botani Hospital



SRJK Bandar Seri Botani

[www.cbre-wtw.com.my](http://www.cbre-wtw.com.my)

CBRE | WTW



E & OE The information contained herein has either been given to us by the owner of the property or obtained from sources that we deem reliable. We have no reason to doubt its accuracy but we do not guarantee it. Prospective purchasers are requested to take such action as may be necessary to satisfy themselves on any pertinent matter.

E(1)0507