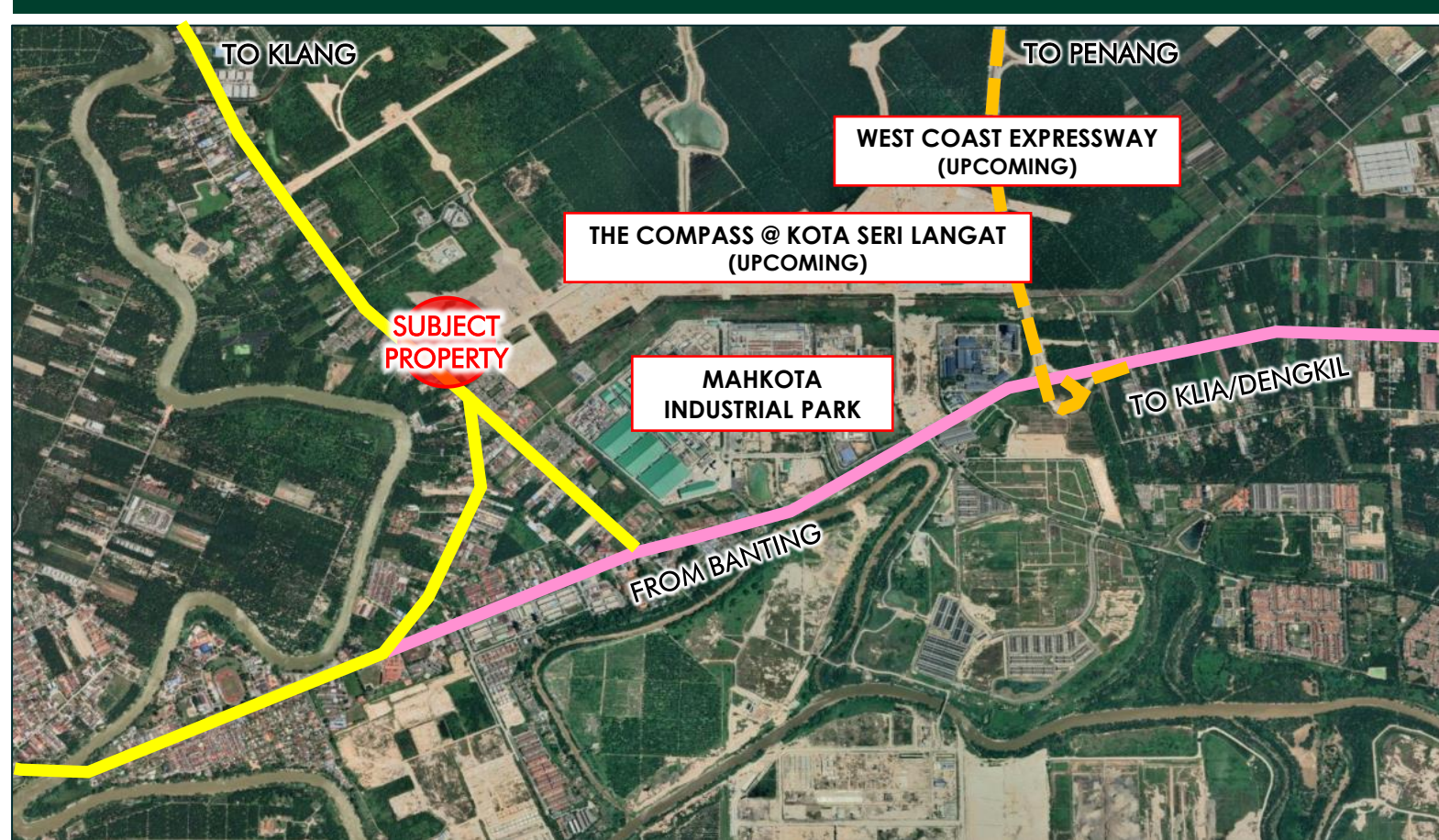


FOR RENT

COMMERCIAL BUILDING

FORMERLY OCCUPIED
BY A HYPERMARKET

@ KOTA SERI LANGAT, BANTING, SELANGOR



1

**STOREY
BUILDING**

165,413

**GROSS FLOOR
AREA (SQ. FT.)**

451

**CAR PARK
BAYS**

8.15

**ACRES
LAND AREA**

KEY HIGHLIGHTS

- ❑ **SUITABLE FOR COMMERCIAL & INSTITUTIONAL USE:** -
Hypermarket, Sporting Goods Retailer, Furniture Mall, Digital Mall, Banquet Hall, Showrooms, Health & Educational Institutions, etc.
- ❑ **CLOSE PROXIMITY** to **BANTING TOWN CENTRE (5 KM)** and **INDUSTRIAL PARKS:** -
The Compass @ Kota Seri Langat (220-acre), Banting Industrial City (1,253-acre) & Bukit Changgang Industrial Park (322-acre), etc.
- ❑ **SURROUNDED BY** residential, commercial & industrial clusters.
- ❑ **GOOD CONNECTIVITY & STRATEGICALLY LOCATED** - Jalan Klang Banting, South Klang Valley Expressway (SKVE), West Coast Expressway (WCE), North-South Expressway Central Link (ELITE), etc.

MARKETING AGENT:

Chris (PV 2643)

012-618 2881

christopher.ng@cbre-wtw.com.my

Han (PV 2031)

012-976 4123

wunhan.chong@cbre-wtw.com.my

CBRE | WTW

CBRE WTW Real Estate Sdn Bhd 199201000893 (232397-D)

www.cbre-wtw.com.my



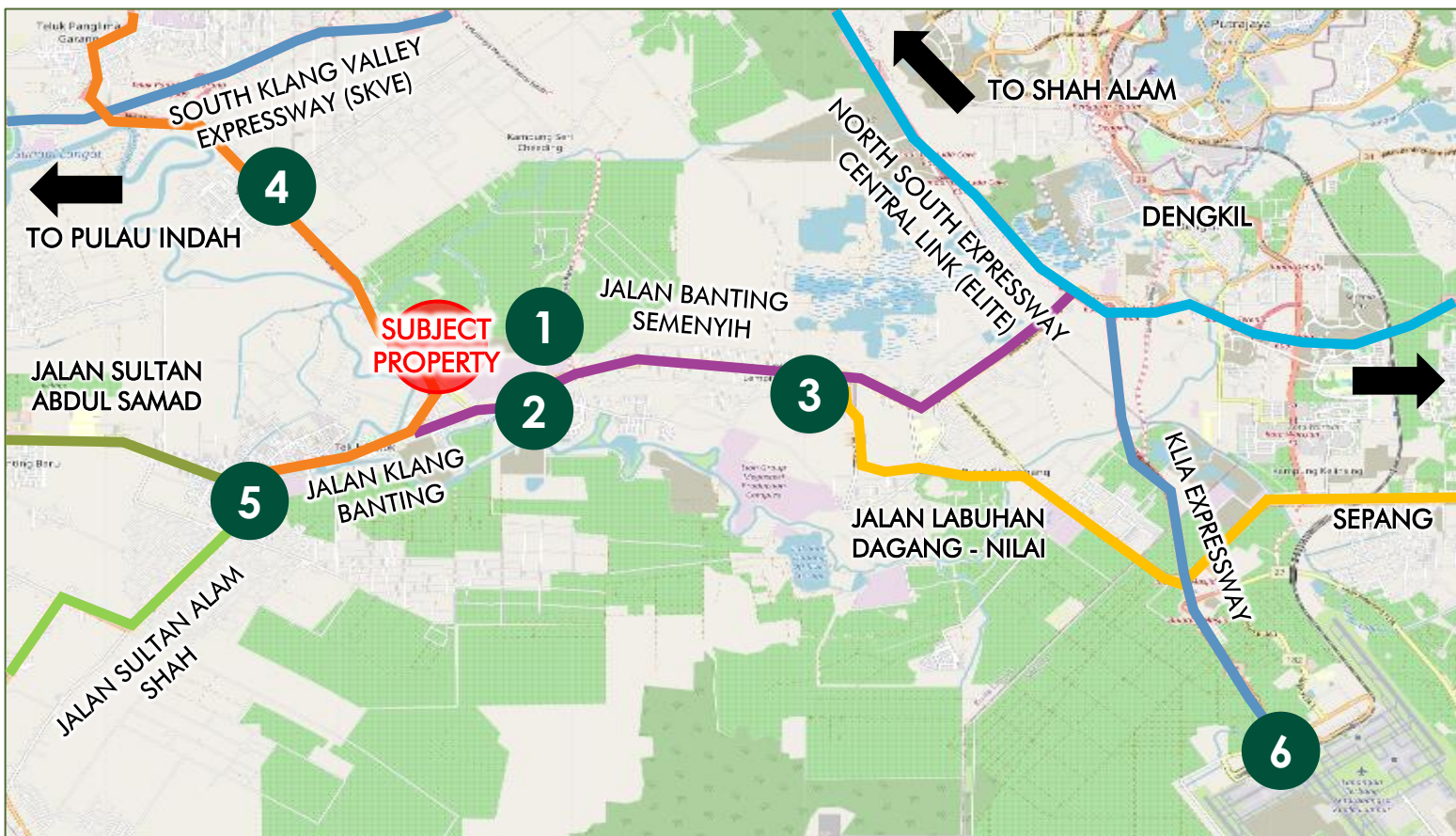
E & O E The information contained herein has either been given to us by the owner of the property or obtained from sources that we deem reliable. We have no reason to doubt its accuracy but we do not guarantee it. Prospective tenants are requested to take such action as may be necessary to satisfy themselves on any pertinent matter.

FOR RENT

COMMERCIAL BUILDING

FORMERLY OCCUPIED BY A HYPERMARKET

@ KOTA SERI LANGAT, BANTING, SELANGOR



Source: opensstreetmap.org



THE COMPASS @ KOTA SERI LANGAT



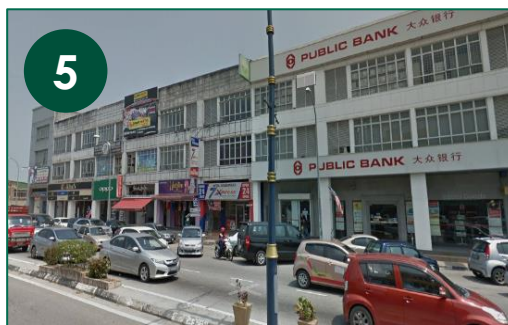
MAHKOTA INDUSTRIAL PARK



OLAK LEMPIT INDUSTRIAL PARK



ECONSAVE / LOTUS JENJAROM



BANTING TOWN CENTRE



KLIA

www.cbre-wtw.com.my

CBRE | WTW



E & O E The information contained herein has either been given to us by the owner of the property or obtained from sources that we deem reliable. We have no reason to doubt its accuracy but we do not guarantee it. Prospective tenants are requested to take such action as may be necessary to satisfy themselves on any pertinent matter.

E(1)0507