

2-STOREY OFFICE BUILDING FOR SALE BY TENDER

EXCLUSIVE AGENT

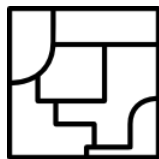
CBRE | WTW

FOR SALE BY TENDER

CLOSING DATE : 12PM, 27 MAY 2022



99 years
Leasehold
(Commence:
March 1958)



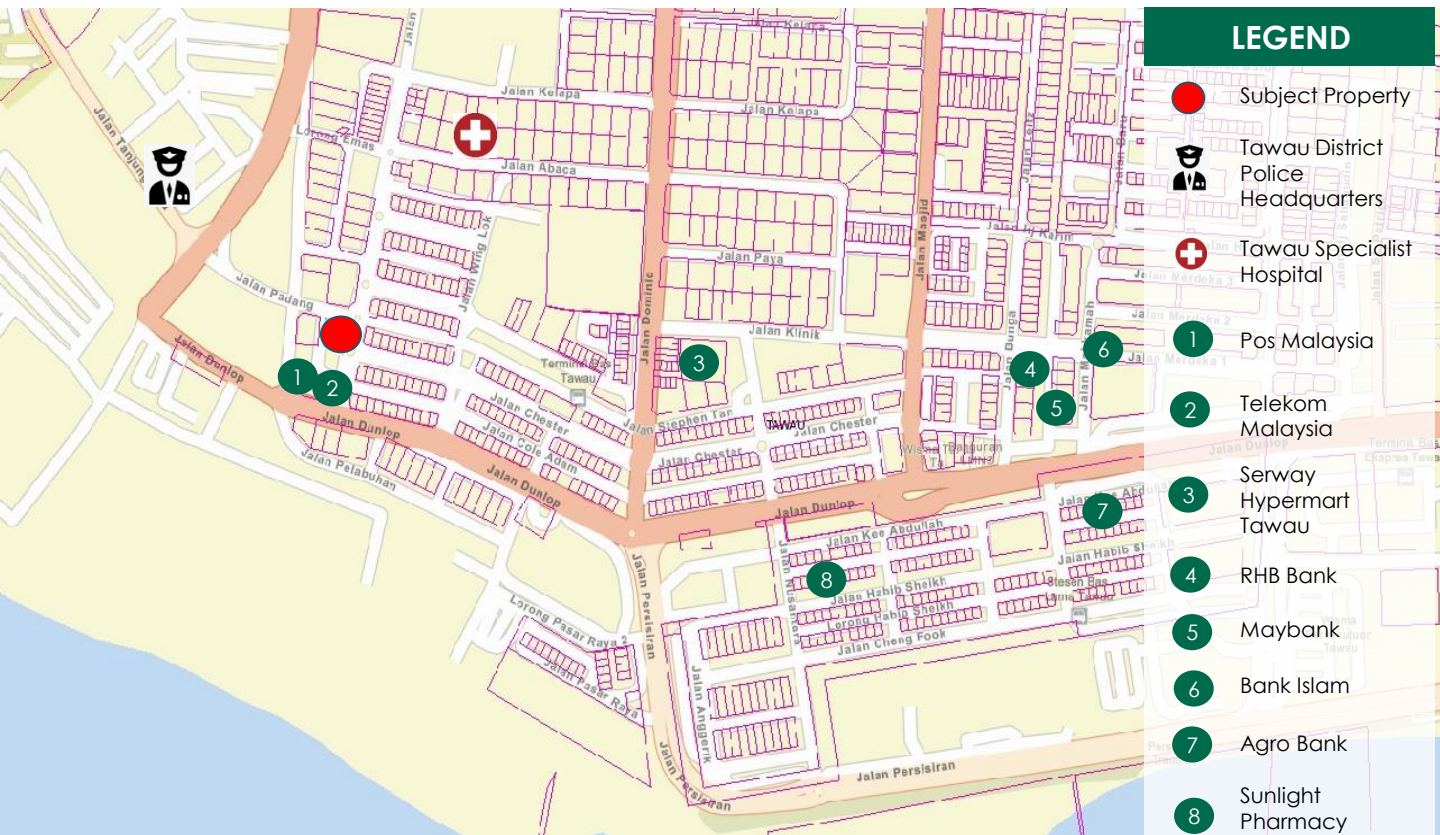
Land Area :
660 Sq. M
(Approx. :
7,105 Sq. Ft.)



Net Floor
Area: 847
SQM (Approx.
: 9,117 Sq. Ft.)



Gross Floor
Area: 899.58
SQM (Approx.
: 9,683 Sq. Ft.)



LEGEND

- Subject Property
- Tawau District Police Headquarters
- + Tawau Specialist Hospital
- 1 Pos Malaysia
- 2 Telekom Malaysia
- 3 Serway Hypermart Tawau
- 4 RHB Bank
- 5 Maybank
- 6 Bank Islam
- 7 Agro Bank
- 8 Sunlight Pharmacy

Source: JIUWMA Pro Street Plan

KEY HIGHLIGHTS

1. Located within the immediate vicinity of Tawau Town Centre.
2. Enjoys dual frontage and has a corner visibility.
3. Accessible via main roads i.e. Jalan Habib Hussien and Jalan Padang.
4. A 2-storey purpose built office building, which is unique and limited in the area.
5. Proximity to amenities and retail businesses such as Serway Hypermarket, Tawau Hospital, Police Headquarters, Pos Malaysia and other major retail businesses.

CONTACT US

SALE BY TENDER CLOSING DATE : 12PM, 27 MAY 2022



WTW Real Estate Sdn Bhd
199201000893 (232397-D)

CBRE | WTW HQ
+603 - 2616 8888

WTW KOTA KINABALU
+6088 - 248801

cbre-wtw.com.my

Karis E- 2091

Mobile: +6012 4130839

Email: karischong@wtwsabah.com.my

Fara PEA2844

Mobile: +6013 275 1145

Office (Direct): (603) 2616 8817

Email: Farahin.kadir@cbre-wtw.com.my



E(1)0507

E & O E The information contained herein has been obtained from sources that we deem reliable. We have no reason to doubt its accuracy but we do not guarantee it. Prospective purchasers are requested to take such action as may be necessary to satisfy themselves on any pertinent matter. If in doubt, please consult a professional advisor.