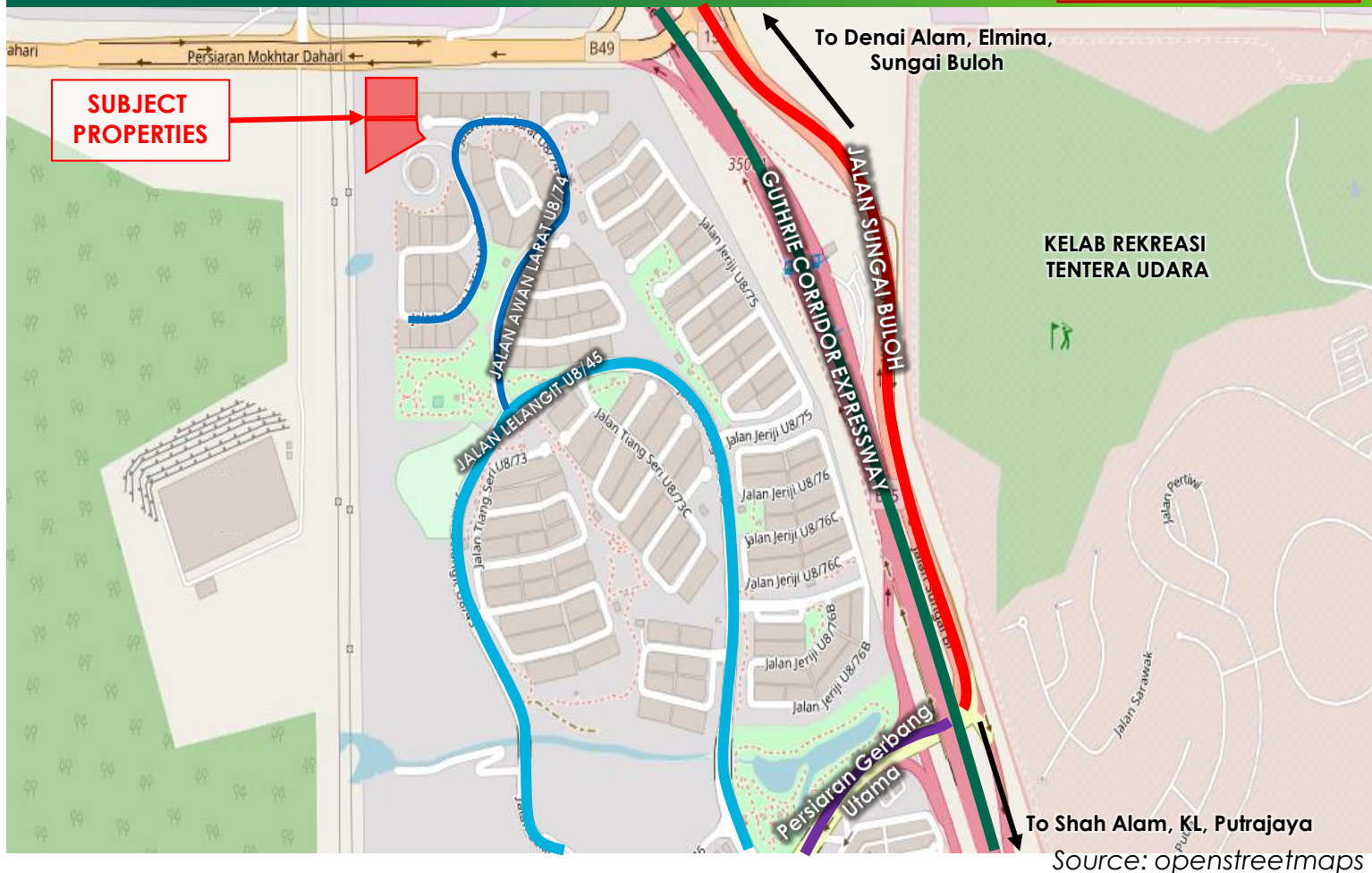


FOR SALE BY TENDER

TWO (2) CONTIGUOUS PARCELS OF RESIDENTIAL LANDS

BUKIT JELUTONG, SHAH ALAM, SELANGOR

Closing Date:
12pm, 18 June 2021



- **Two (2) parcels of CONTIGUOUS VACANT RESIDENTIAL LANDS:** 2,316 square metres (24,929 square feet/0.57 Acres) and 1,981 square metres (21,323 square feet/0.49 Acres).
- **TENURE:** Term in Perpetuity (Freehold)
- Located within **BUKIT JELUTONG D'PUNCAK** enclave with guarded facilities.
- 15min drive (10km) to **Shah Alam Town Centre**, 17min drive (10km) to **City of Elmina** and 20min drive (10km) to **Subang Jaya**.
- Locality is abundant with a variety of **AMENITIES**, such as banks, grocery stores, pharmacies, restaurants, schools, clinics and petrol stations.
- Notable commercial outlets within the vicinity includes **JAYA GROCER, KFC, MYDIN, 99 SPEEDMART** etc.
- **EASY ACCESS** to **Guthrie Corridor Expressway, ELITE Highway and NKVE Highway**.

Exclusive Marketing Agent:

Khairi (PV2213)

019-299 3063

Khairi.ikmal@cbre-wtw.com.my

Farahin (PEA2844)

013-275 1145

Farahin.kadir@cbre-wtw.com.my

CBRE | WTW

WTW Real Estate Sdn Bhd 199201000893 (232397-D)

www.cbre-wtw.com.my



E(1)0507

E & O E The information contained herein has either been given to us by the owner of the property or obtained from sources that we deem reliable. We have no reason to doubt its accuracy but we do not guarantee it. Prospective purchasers are requested to take such action as may be necessary to satisfy themselves on any pertinent matter.