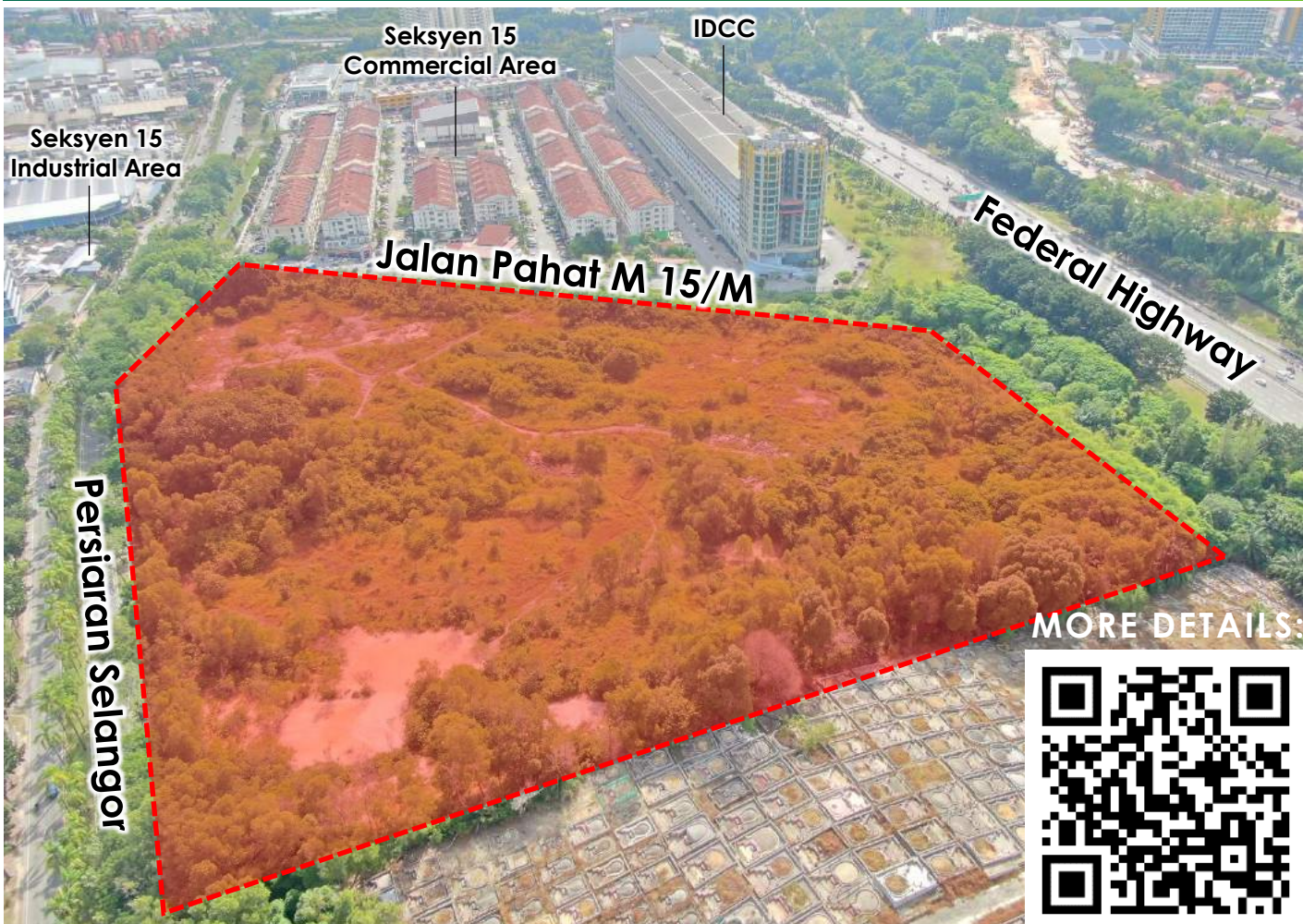


FOR SALE BY TENDER

# 20-ACRE DEVELOPMENT LAND

@ Persiaran Selangor  
Seksyen 15, Shah Alam

Closing Date:  
12 pm  
5 MAY 2021



MORE DETAILS:



- ✓ **LOCATED** within the well-established Seksyen 15, Shah Alam
- ✓ **FRONTING** Federal Highway
- ✓ **POTENTIAL** Direct Access from Federal Highway and Industrial use
- ✓ **CLOSE PROXIMITY** to IDCC, Seksyen 15 Commercial & Industrial Area
- ✓ **TRAVELLING** Distance: Subang ≈ 12km, Klang ≈ 12km, Sunway ≈ 13km, Bukit Jelutong ≈ 15km, Petaling Jaya ≈ 17km.

Exclusive Marketing Agent:

**William** (REN 12354)

**016-337 6664**

William.yuen@cbre-wtw.com.my

**Chris** (PV 2643)

**012-618 2881**

Christopher.ng@cbre-wtw.com.my

**CBRE | WTW**

WTW Real Estate Sdn Bhd (232397-D)

www.cbre-wtw.com.my

**03- 2616 8888**



E & O E The information contained herein has either been given to us by the owner of the property or obtained from sources that we deem reliable. We have no reason to doubt its accuracy but we do not guarantee it. Prospective purchasers are requested to take such action as may be necessary to satisfy themselves on any pertinent matter.

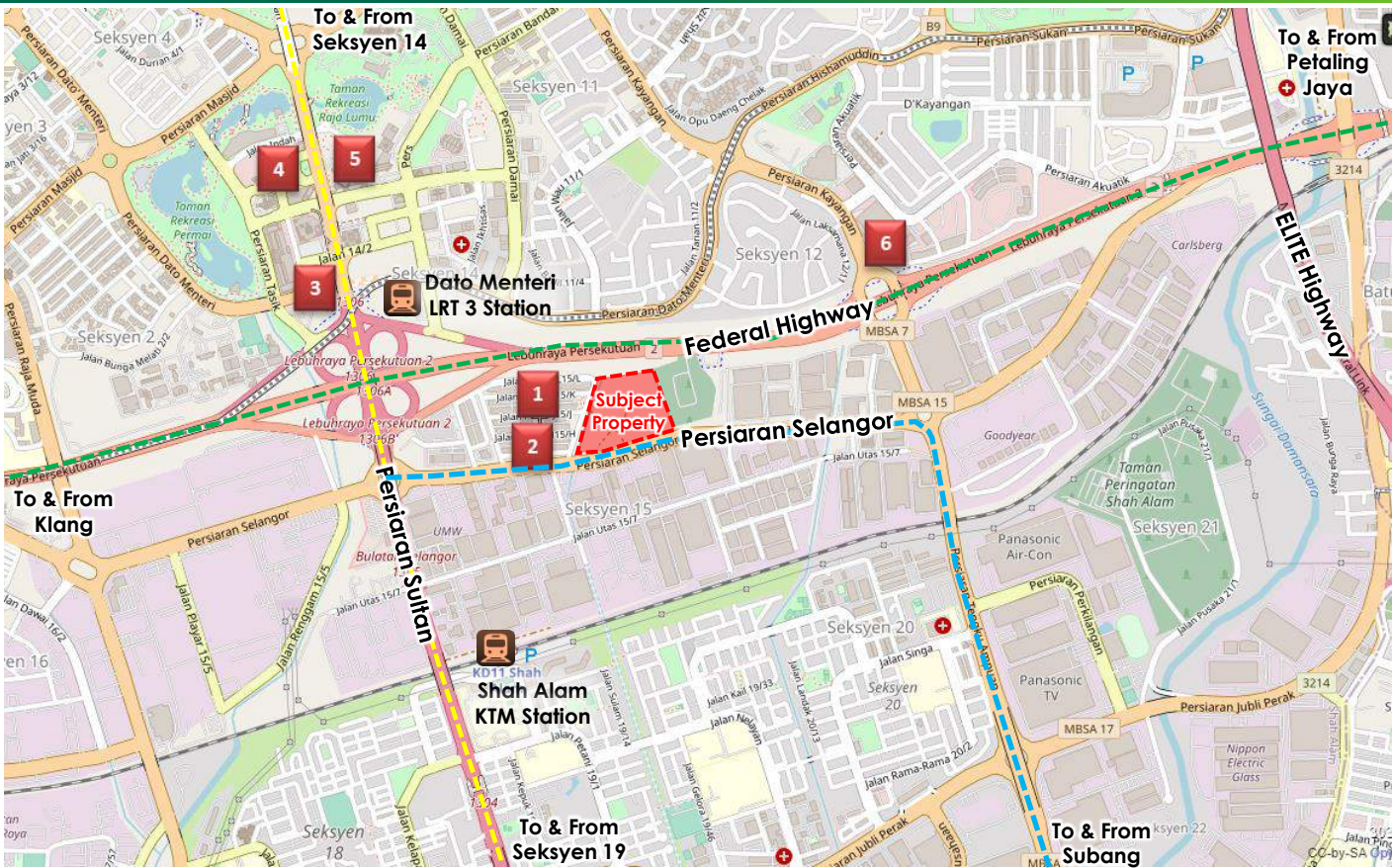


FOR SALE BY TENDER

# 20-ACRE DEVELOPMENT LAND

@ Persiaran Selangor  
Seksyen 15, Shah Alam

Closing Date:  
12 pm  
**5 MAY 2021**



1 Ideal Convention Centre



2 Seksyen 15 Commercial Area



3 Shah Alam Convention Centre



4 Plaza Alam Sentral



5 Shah Alam City Council



6 Tesco Extra Shah Alam

[www.cbre-wtw.com.my](http://www.cbre-wtw.com.my)

**CBRE | WTW**



E(1)0507

E & O E The information contained herein has either been given to us by the owner of the property or obtained from sources that we deem reliable. We have no reason to doubt its accuracy but we do not guarantee it. Prospective purchasers are requested to take such action as may be necessary to satisfy themselves on any pertinent matter.