

FOR SALE BY EXPRESSION OF INTEREST (EOI)

20-Storey Office Building in KL CBD

Jalan Raja Chulan, Kuala Lumpur

Closing Date:
STAGE 1
12 pm,
11 September 2020



- **Freehold**
- Approximate Initial Yield of **6%**
- Land Area : **2,767 Sq. M** (Approximately 29,784 Sq. Ft.)
- Net Lettable Area: **18,650.84 Sq. M** (Approximately 200,756 Sq. Ft.)
- Gross Floor Area: **34,999.10 Sq. M** (Approximately 376,727 Sq. Ft.)
- Within an established commercial area **ACCESSIBLE** via **Jalan Raja Chulan, Jalan Sultan Ismail** and **Jalan Tengah**.
- Easy access to landmarks in KL and **public transportation** networks such as Mass Rapid Transit (MRT), Monorail and bus networks.
- Flexible range in commercial change of use with local council approval.

Exclusive Marketing Agent:

Farahin (PV2110)

013 275 1145

Farahin.kadir@cbre-wtw.com.my

Khairi (PV 2213)

019 299 3063

Khairi.ikmal@cbre-wtw.com.my

CBRE | WTW

WTW Real Estate Sdn Bhd 199201000893 (232397-D)

www.cbre-wtw.com.my



E(1)0507

E & O E The information contained herein has been obtained from sources that we deem reliable. We have no reason to doubt its accuracy but we do not guarantee it. Prospective purchasers are requested to take such action as may be necessary to satisfy themselves on any pertinent matter. If in doubt, please consult a professional advisor.

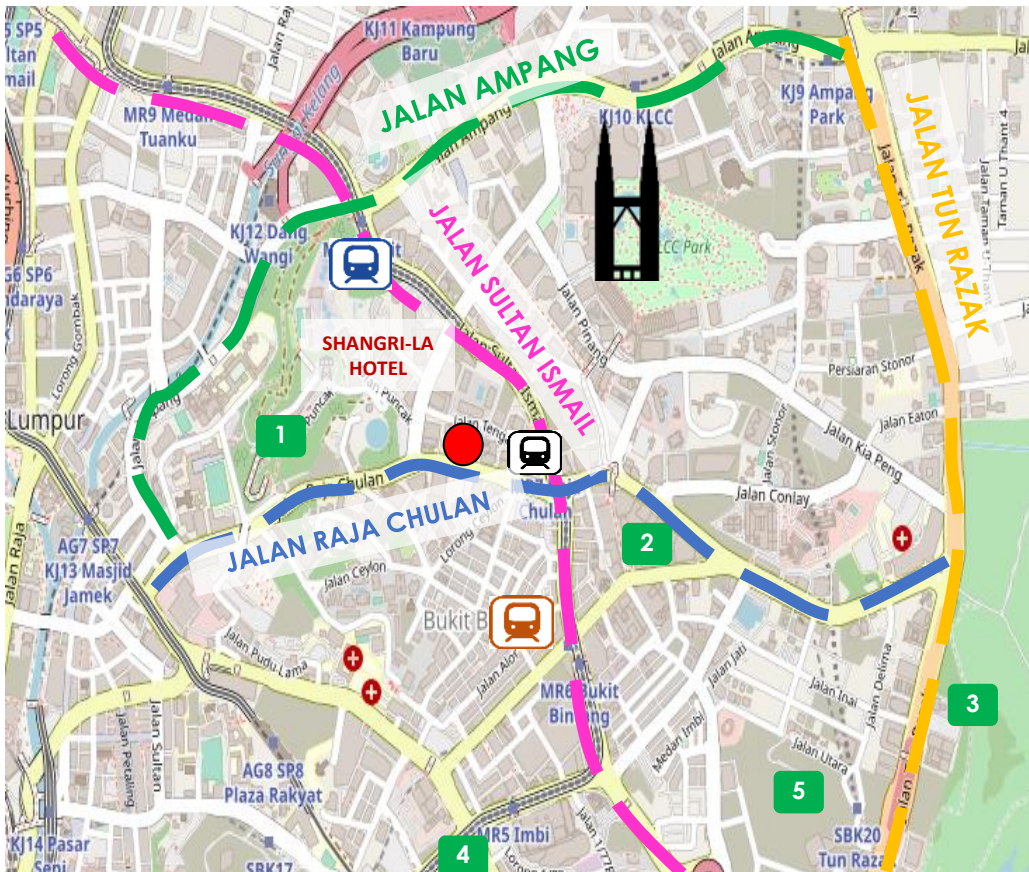
FOR SALE BY EXPRESSION OF INTEREST (EOI)

20-Storey Office Building in KL CBD

Jalan Raja Chulan, Kuala Lumpur

Closing Date:
STAGE 1
12 pm,
11 September 2020

LOCATION MAP

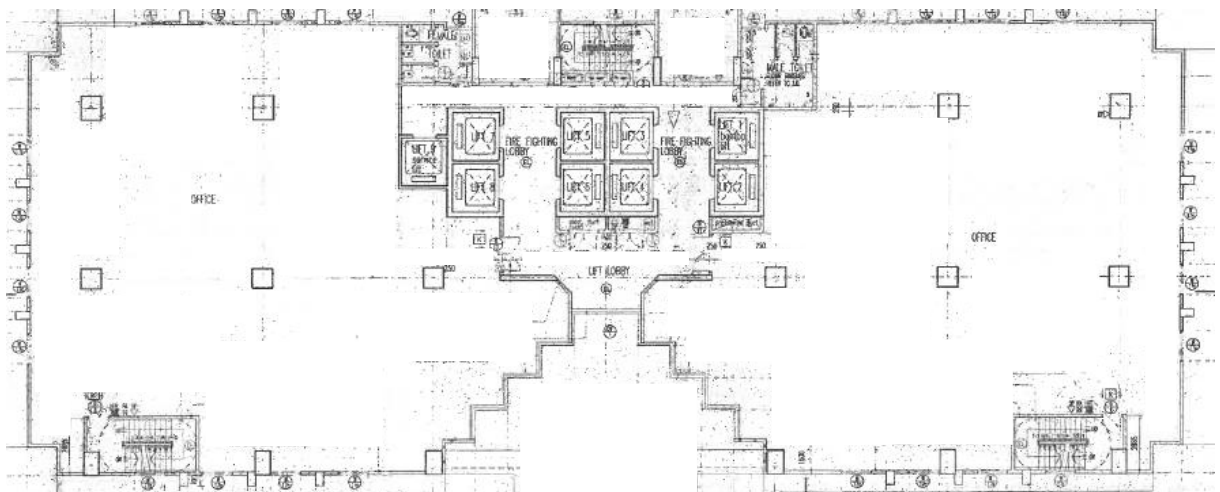


LEGEND

- Subject Property
- Petronas Twin Tower
- Hospital
- Raja Chulan Monorail Station
- Bukit Nanas Monorail Station
- Bukit Bintang MRT Station
- 1 Menara Kuala Lumpur
- 2 Pavilion Kuala Lumpur
- 3 Royal Selangor Golf Club
- 4 Bukit Bintang City Centre
- 5 Tun Razak Exchange

Source: iplan.townplan.gov.my

TYPICAL FLOOR LAYOUT



www.cbre-wtw.com.my

CBRE | WTW



E & O E The information contained herein has been obtained from sources that we deem reliable. We have no reason to doubt its accuracy but we do not guarantee it. Prospective purchasers are requested to take such action as may be necessary to satisfy themselves on any pertinent matter. If in doubt, please consult a professional advisor.